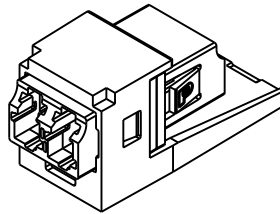
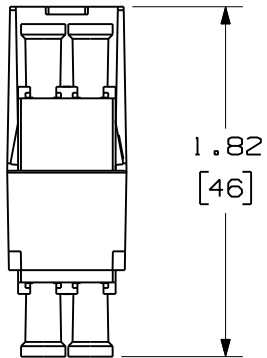


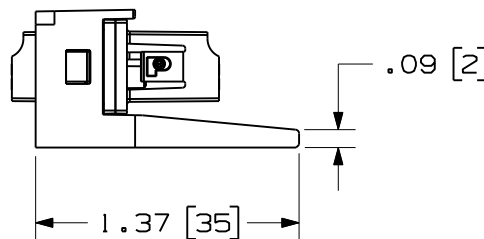
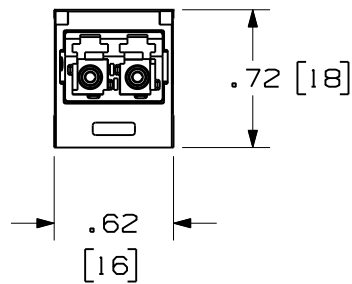
THIS COPY IS PROVIDED ON A RESTRICTED BASIS AND IS NOT TO BE USED IN ANY WAY DETRIMENTAL TO THE INTERESTS OF PANDUIT CORP.



ISOMETRIC VIEW
SHOWN W/O DUSTCAPS

NOTES:

1. SEE CATALOG FOR COMPLETE LIST OF PARTS APPLICABLE FOR USE WITH THIS PRODUCT AND PACKAGE QUANTITIES.
2. MATERIALS:
 - a. MODULE BASE: ABS
 - b. ADAPTER: COMPOSITE
 - c. SPLIT SLEEVE: ZIRCONIA
3. ALL MATERIALS AND COMPONENTS USED MEET THE MATERIAL RESTRICTIONS OF RoHS, (EUROPEAN DIRECTIVE 2002/95/EC ON THE RESTRICTION OF HAZARDOUS SUBSTANCES) AS PROPOSED BY THE RoHS TECHNICAL ADAPTATION COMMITTEE.
4. DIMENSIONS IN BRACKETS ARE METRIC.



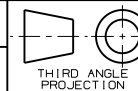
DUST CAPS REMOVED FOR CLARITY

LC ADAPTER HOUSING KEY CONFIGURATIONS		
"A" BLACK	"B" RED	"C" GREEN
"D" YELLOW	"E" ORANGE	"F" DARK BLUE

MINI-COM
KEYED DUPLEX LC ADAPTER MODULE
CUSTOMER DRAWING



PANDUIT™
CORP.
TINLEY PARK, ILL 60477



ALL DIMENSIONS ARE GIVEN IN INCHES
UNLESS OTHERWISE SPECIFIED.
DIMENSIONAL TOLERANCES ARE:
(.X) ±.03 (0.8) ANGLES
(.XXX) ±.010 (0.3)

DRAWING FILENAME
M02849AA_DA_00A.prt

SCALE
NONE

DRAWN BY
MC

REVIEW DRAWING NUMBERS

PART NO.
SEE TABLE, SHT. 2

DATE
10-16-07

DRAWING NO.
02849-02
(SHT. 1 of 2)

SIZE
A

REV	DATE	BY	CHK	DESCRIPTION	ECN	R	CUST	SUP	OTH
R	10-17-07	MC		RELEASED TO PRODUCTION	02849-02				

